



EnterpriseIQ RealTime™ Production Monitoring

Optimizing Manufacturing Performance

Control Without Leaving Your Desk

EnterpriseIQ's RealTime Production Monitoring takes plant management to a higher level, supporting machine management in true real-time. All aspects of production are tracked immediately as parts are being made and applied to the shop orders, automatically updating the schedule and finished product counts. The result of this embedded solution is improved efficiency, visibility and productivity. Take control of the plant floor with the RealTime Production Monitoring module from IQMS.

By linking directly to your machines, RealTime can monitor discrete, cyclical and continuous operations. View work center performance from any computer on your network (even remotely) and check production as it occurs. Total parts created, production time, downtime, rejects and parts remaining to be produced are immediately monitored. Production shift reports are generated automatically, making product reporting and inventory reconciliation a simple task. If you want shop floor monitoring and ERP communication at its most accurate, RealTime is the best tool.

Now available using wireless mesh network technology and LightSticks!

BENEFITS

- Improve on-time machine performance
- Eliminate the need for expensive and inefficient third-party interfaces
- Increase data integrity and accuracy with automatic collection and reporting
- Lower overhead costs by eliminating manual data entry
- Reduce scrap through improved production visibility
- Ensure plant efficiency by identifying poor work center performance
- Immediately identify unscheduled downtime
- Increase communication across your facility with visibility to all connected machines from any networked workstation

Color-coded screens provide fast and accurate visualization of production status. A single mouse click offers quick links to initiate multiple functions.

WorkC	Mfg#	Labor	Tool #	Item Number	Rev	FG Lot #	WkOrd Qty	Parts to Go	Hrs To Go	Total Scrap	Quality Issues	STD Cycle	Last Cycle	AVG Cycle	Act Cav	Std Cav	UpHrs	DwnHrs
01	91167019	1.00	34-5568	91167019		267131	6,507	6,187	18.65	0		45.00	42.58	43.41	4	4	0.97	7.02
02	103-C008	1.75	STA1837	01-9543055	C	273649	5,000	3,746	2.93	0	Y	30.00	28.96	30.94	11	12	0.97	7.02
03	MN-1		STA1837	9324934		267572	16,000	14,448	25.59	0		25.00	24.293	25.47	4	4	0.97	7.02
04	801-TP	0.00	801-TP	34898934	A	267111	17,714	17,654	287.96	0		30.00	56.763	58.72	1	1	0.97	7.02
04	801-TP	0.00	801-TP	967654789	A	267111	17,714	17,654	287.96	0		30.00	56.763	58.72	1	1	0.97	7.02
06	FDW-005	1.00	S2501-1804	99-1809-860-003		267635	4,100	3,759	10.63	0		19.50	22.265	20.36	2	2	0.97	7.02
06	AD-1300-CL	0.00	AD-1300-CL	AD-143453245	A	267176	3,301	8,865	19.67	0		32.00	34.419	31.95	4	4	0.97	7.02
07	T-004-2	0.00	T-300-2	8-17-43679334	D	267784	78,372	78,156	352.14	0		45.00	32.406	32.44	2	2	0.97	7.02
08	CASCOM-25			26262		267422	9,526	9,470	166.09	0		65.00	64.86	63.14	1	1	0.97	7.02
09A	S2-131-284	1.00	S2-BODY /	S2-131-284		268949	3,302	3,222	39.94	0		95.00	85.128	83.25	2	2	0.97	7.02
09B	S2-131-285	1.00	S2-RIGHT W	S2-131-285		267651	3,512	3,432	42.54	0		95.00	85.128	83.25	2	2	0.97	7.02
09C	S2-131-286	1.00	S2-LEFT WA	S2-131-286		268951	3,220	3,140	38.92	0		95.00	85.128	83.25	2	2	0.97	7.02
10A	AP-009	0.50	0288	CTS52313M	R	267236	43,035	42,822	195.08	0		40.00	48.664	49.20	3	4	0.97	7.02
10B	AP-001	1.00	271	18001		267181	11,131	11,060	151.15	0		50.00	48.664	49.20	1	1	0.97	7.02
10B	AP-001	1.00	271	18008		267181	11,131	11,060	151.15	0		50.00	48.664	49.20	1	1	0.97	7.02
10B	AP-001	1.00	271	TC18009		267181	11,131	11,060	151.15	0		50.00	48.664	49.20	1	1	0.97	7.02
10B	AP-001	1.00	271	TC18006		267181	11,131	11,060	151.15	0		50.00	48.664	49.20	1	1	0.97	7.02
10C	SP-505883 B	0.10	505883 C	SP-505883 PP		268956	3,066	2,995	40.93	0		10.00	48.664	49.20	1	1	0.97	7.02
11	10007024	0.50		DP-4904	B	266964	20,000	19,726	69.89	0		25.00	24.293	25.51	2	2	0.97	7.02
12	STA1837A	0.43	STA1837	S84I0945		267766	55,729	55,565	328.75	0		47.20	81.113	85.20	4	6	0.97	7.02
13	CASCOM-10			FLOOR TOP/FOO		267350	28,098	27,929	161.06	0		20.00	18.224	20.76	1	1	0.97	7.02
14	NYJ1732A-1A			348890N4		267604	3,603	3,315	11.20	0		35.60	36.464	36.48	3	4	0.97	7.02
15	CL1A	0.00	CL1A	056895665-SH	B	271377	66	33	-0.32	0		35.00	32.391	34.94	1	1	0.97	7.02
16	CASCOM-24		T-889940	HINGE PIN RETA		267413	56,196	55,140	51.95	0		55.00	50.631	53.65	16	16	0.97	7.02

"You just can't hide from RealTime. It shows you the reality of what your production machines are really doing."

- I-Tech

"Our labor, as a percentage of sales, has been on a constant decline since implementing RealTime. One glance shows exactly what's running and intelligent decisions can be made regarding deployment of personnel."

-Kaysun Corporation

EnterpriseIQ RealTime™ Production Monitoring

Key Features

Automatically Monitor Operations – Connect directly to your machines and monitor production counts on operations such as stamping, molding, forming, extrusion, assembly process, etc.

Reject Entry – User-defined codes manage rejected parts that immediately affect production counts and scheduling.

Downtime Reporting – Instantly track up and down time and utilize customized, detailed downtime coding for analysis.

Setup and Material Notifications – Links to scheduling provide customized notification when new materials and tools are required for new jobs.

Document/Quality Control – Access documents, videos and pictures that are linked directly to the Bill of Material or inventory part. Initiate inspections with a single mouse click.

Assign Labor – Input labor to the job and work center for tracking and costing.

Labels – Print labels manually as they are needed or automatically based on production counts.

Multi-Part Job Handling – RealTime supports jobs that produce multiple, unique items per production cycle.

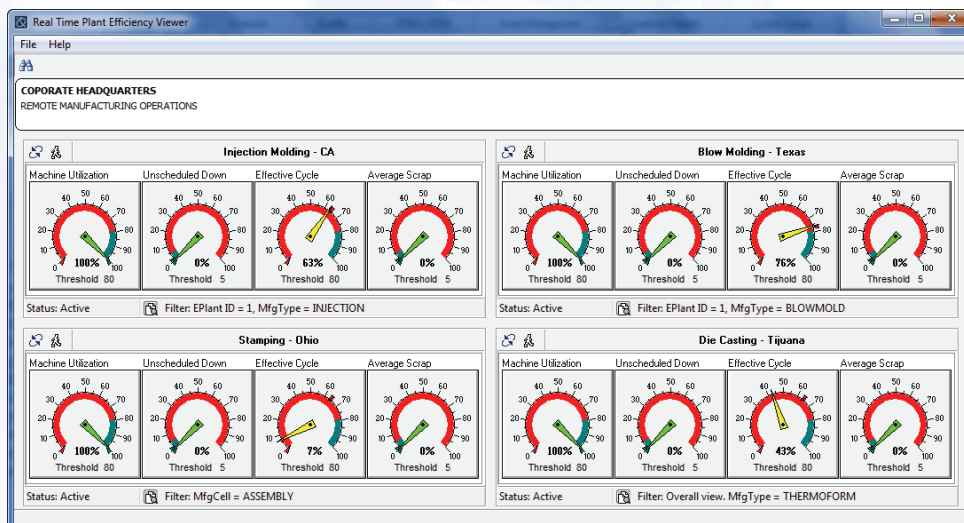
Electronic Production Log – Enter notes and comments by date, shift, work center or BOM.

Preventative Maintenance (PM) – Tap directly into the PM module to create maintenance work orders that are immediately available to all necessary personnel.

Production Reporting – Report production as it occurs. RealTime also automatically generates production reports after every shift.

Voice Alerts – Connect to your paging system or cell phones to automatically notify production personnel or shift managers of shop floor issues.

Overall efficiency views - with drill down to individual work centers - shows overall machine utilization, unscheduled downtime, effective cycle time and average scrap for each work cell or business unit.



“RealTime lets us keep our pulse on the factory floor like nothing else. We get instantaneous feedback on our critical parameters. Management has more oversight on all production activity which has resulted in significant productivity increases.”

**-Preproduction
Plastics**