



AG

**ACORNGENCON
PLASTICS™**
LLC

MADE IN
CHINO
CALIFORNIA

**YOUR DESIGN,
BROUGHT TO LIFE
IN CHINO...
NOT CHINA.SM**

ACORN-GENCON® PLASTICS

13818 OAKS AVENUE

CHINO, CA 91710 USA

(909) 591-8461

ACORN-GENCON.COM

INFO@ACORN-GENCON.COM

FULL SERVICE

PLASTIC INJECTION MOLDING



24-HOUR PRODUCTION

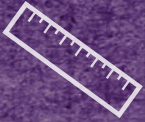
- Fastest turnaround in the industry
- We finish most jobs in a day
- Done right the first time



PRODUCT ASSEMBLY & PACKAGING

ON-SITE TOOL ROOM

- Quick and easy fixes and modifications on-site



LOCATION IS KEY

Located 10 minutes outside Los Angeles County, Acorn-Gencon® is closer to multiple major distribution centers, including Amazon; Walmart; Bed, Bath & Beyond; and more.



WARNING: Cancer and Reproductive Harm - www.P65Warnings.ca.gov

DESIGN / ENGINEERING

- Dedicated staff of experienced project managers.
- 2D & 3D file handling capabilities (AutoCad, ProE, Solidworks).
- Rapid proto-types (3D printing and thermoplastic).
- Mold design review.
- Process and tooling trouble-shooting.

TOOLING SERVICES

- Full Service toolroom with CNC mill, CNC lathe, machine lathes, surface grinders, mills, welding, to support production.
- Complete project management of both Asian and Domestic tool builds.
- Mainland China mold-making.
- Mold design.
- Mold maintenance programs.
- Mold sampling.
- Preventative maintenance program.

MANUFACTURING CAPABILITIES

- 28 injection molding presses, from 55 to 720 tons.
- Process Automation with Yushin 4-axis full servo-robots and Yushin pneumatic pickers.
- Insert molding and co-molding / over-molding.
- Short and long runs.
- Short lead-times.

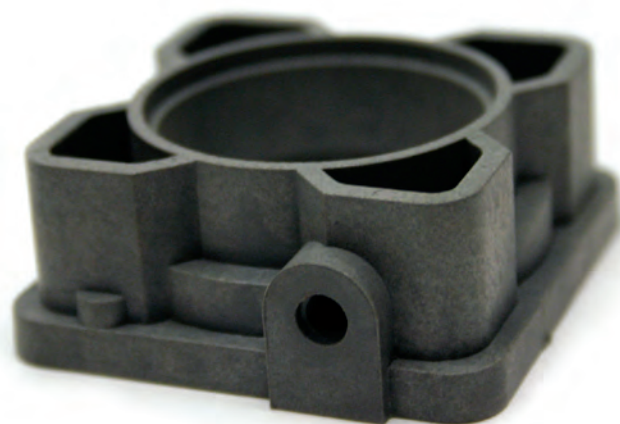
QUALITY ASSURANCE

ISO 9001:2015 CERTIFICATION.

- Fully equipped Quality Assurance Lab (CMM, RAM Optical).
- SPC capabilities. Capability studies (PCS).
- ANSI/ASQ Z1.4 AQL lot sampling.

SECONDARY OPERATIONS

- Sub-assembly to complete assembly.
- Ultrasonic welding.
- Hot stamping.
- Retail packaging.
- Part machining.



MACHINE MFG.	CLAMP TONNAGE	BARREL SIZE (OZ)	TIEBAR SPACING (H X V)	PLATEN SIZE (H X V)	DIE HEIGHT MIN.	DIE HEIGHT MAX.	MAXIMUM DAYLIGHT
TOSHIBA ELEC.	720	126	42.5 X 42.5	60.2 X 60.2	17.1	40.0	70.9
VAN DORN	650	80	36.0 X 36.0	53.0 X 53.0	12.0	34.0	53.8
BATTENFELD	500	77.4	31.5 X 31.5	45.67 X 49.40	14.96	32.67	62.2
JSW	500	53.3	31.9 X 31.9	46.3 X 46.3	15	29.5	61
TOSHIBA	500	48	34.2 X 31.8	48.4 X 45.6	11.8	41.34	49.2
JSW	385	48.5	28.7 X 28.7	40.7 X 40.7	12.6	26.4	53.9
JSW	385	34	28.7 X 28.7	40.7 X 40.7	12.6	26.4	53.9
JSW	310	34	24.8 X 24.8	34.7 X 34.7	9.8	20.9	43.3
JSW	310	28.6	24.8 X 24.8	34.7 X 34.7	9.8	20.9	43.3
VAN DORN	300	30	25 X 25	37 X 37	8	25	49
JSW ELEC.	200	9.6	20.9 X 20.9	30.7 X 30.7	8.66	19.69	37
JSW ELEC.	200	9.6	20.9 X 20.9	30.7 X 30.7	8.66	19.69	37
VAN DORN	170	8	20 X 20	29 X 29	6	18	35
JSW	165	7.27	20.1 X 20.1	29.1 X 29.1	8.7	17.7	35
JSW	165	4.3	20.1 X 20.1	29.1 X 29.1	8.7	17.7	35
JSW	165	11.8	20.1 X 20.1	29.1 X 29.1	8.7	17.7	35
VAN DORN	120	8	17 X 17	25 X 25	6	16	30
VAN DORN	120	8	17 X 17	25 X 25	6	16	30
JSW	110	5.6	16.1 X 16.1	24 X 24	7.9	15.7	29.5
JSW ELEC.	95	3.7	14.2 X 14.2	20.9 X 20.9	7.1	13.8	25.6
JSW ELEC.	95	3.7	14.2 X 14.2	20.9 X 20.9	7.1	13.8	25.6
JSW ELEC.	95	3.7	14.2 X 14.2	20.9 X 20.9	7.1	13.8	25.6
JSW	85	4.8	14.2 X 14.2	20.9 X 20.9	7.1	13.8	25.6
JSW	85	4.8	14.2 X 14.2	20.9 X 20.9	7.1	13.8	25.6
JSW	85	4.8	14.2 X 14.2	20.9 X 20.9	7.1	13.8	25.6
JSW	55	2.6	12.2 X 12.2	18.1 X 18.1	6.3	11.8	21.7
TOSHIBA ELEC.	55	1.2	16.1 X 14.2	20.1 X 18.1	5.9	18.5	30.3
TOSHIBA ELEC.	55	.08	16.1 X 14.2	20.1 X 18.1	5.9	18.5	30.3



TESTIMONIAL

"We are a manufacturer of Torque and Test Equipment in the City of Industry. In recent years, we have been working on product improvements with our electronic tool line. After working with numerous plastic companies, dealing with issues pertaining to chemical resistance and ease of manufacturing, we came across **ACORN-GENCON®**. **They helped us resolve long standing issues and brought in the necessary expertise to get the job done.** Through them, we eliminated unnecessary sonic welding and they helped us to transition to more efficient (practical) materials for laser marking."

KERRY RUCKER

Director, Materials and Quality
Snap-On Specialty Tools



ACORN-GENCON® PLASTICS

13818 OAKS AVENUE
CHINO, CA 91710 USA
(909) 591-8461

ACORN-GENCON.COM
INFO@ACORN-GENCON.COM

L1001393
0918